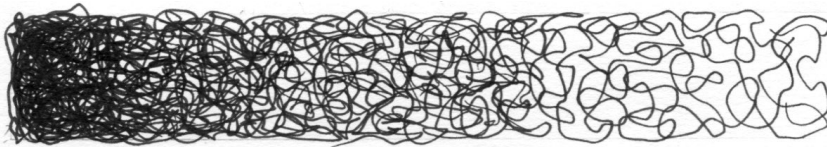
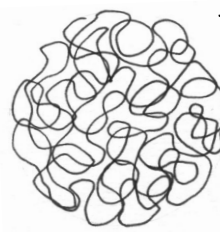
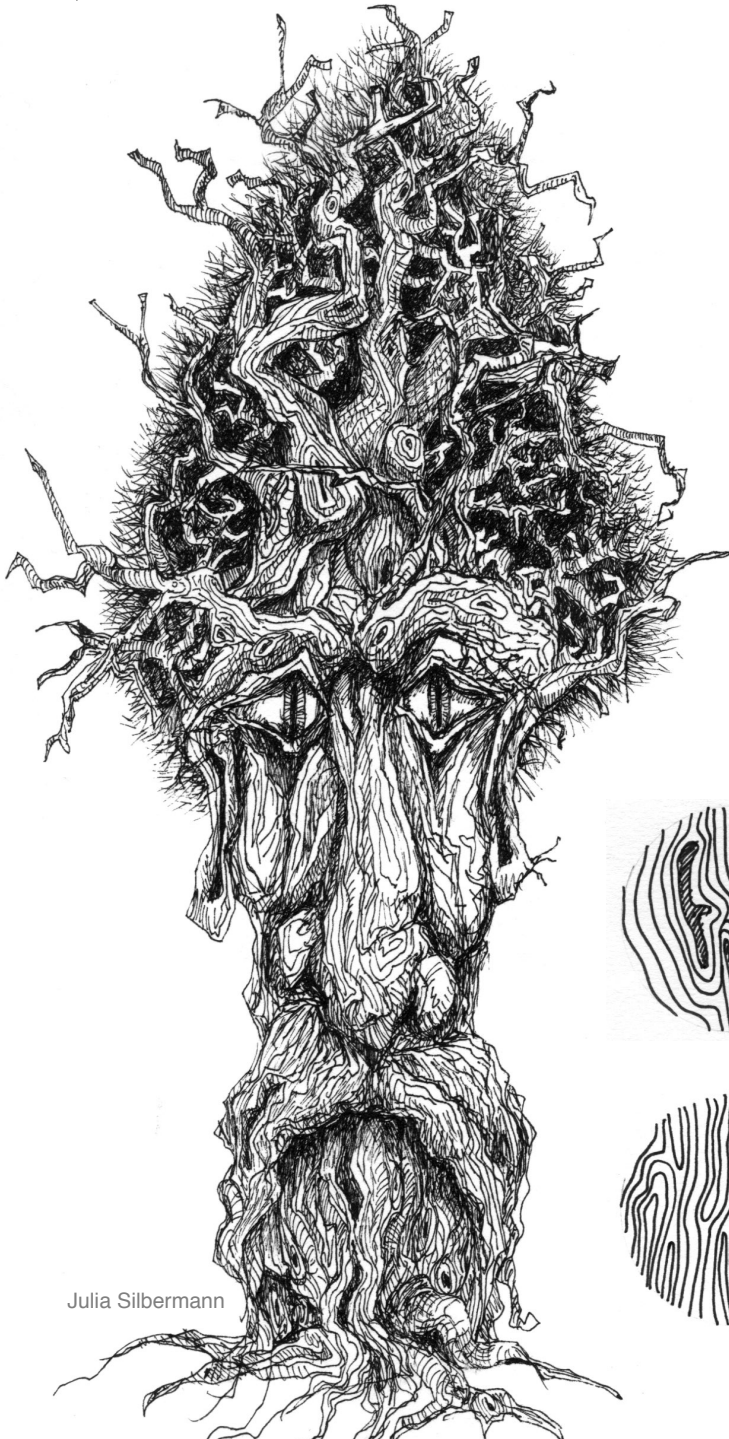


Scribble Lines

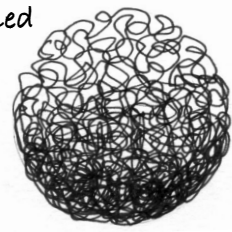
Scribble lines are great to achieve a thick overgrown look. They are ideal for quick studies and fast shadowing, but not meant to be photo perfect.



value chart



tangled



wiry

Use:

- fast technique for very dark shadows
- textures such as hair or wool and other textiles
- undergrowth, tree bark, moss and foliage

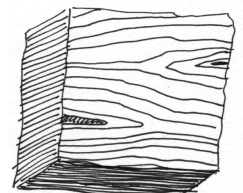
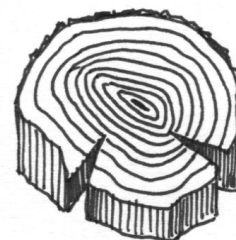


Julia Silberman

Wavy Lines

Use:

- depicting repetitive patterns
- tree or water rings (draw from outside in)
- feather barbs
- long wavy hair
- wood grain and mineral patterns



Julia Silberman